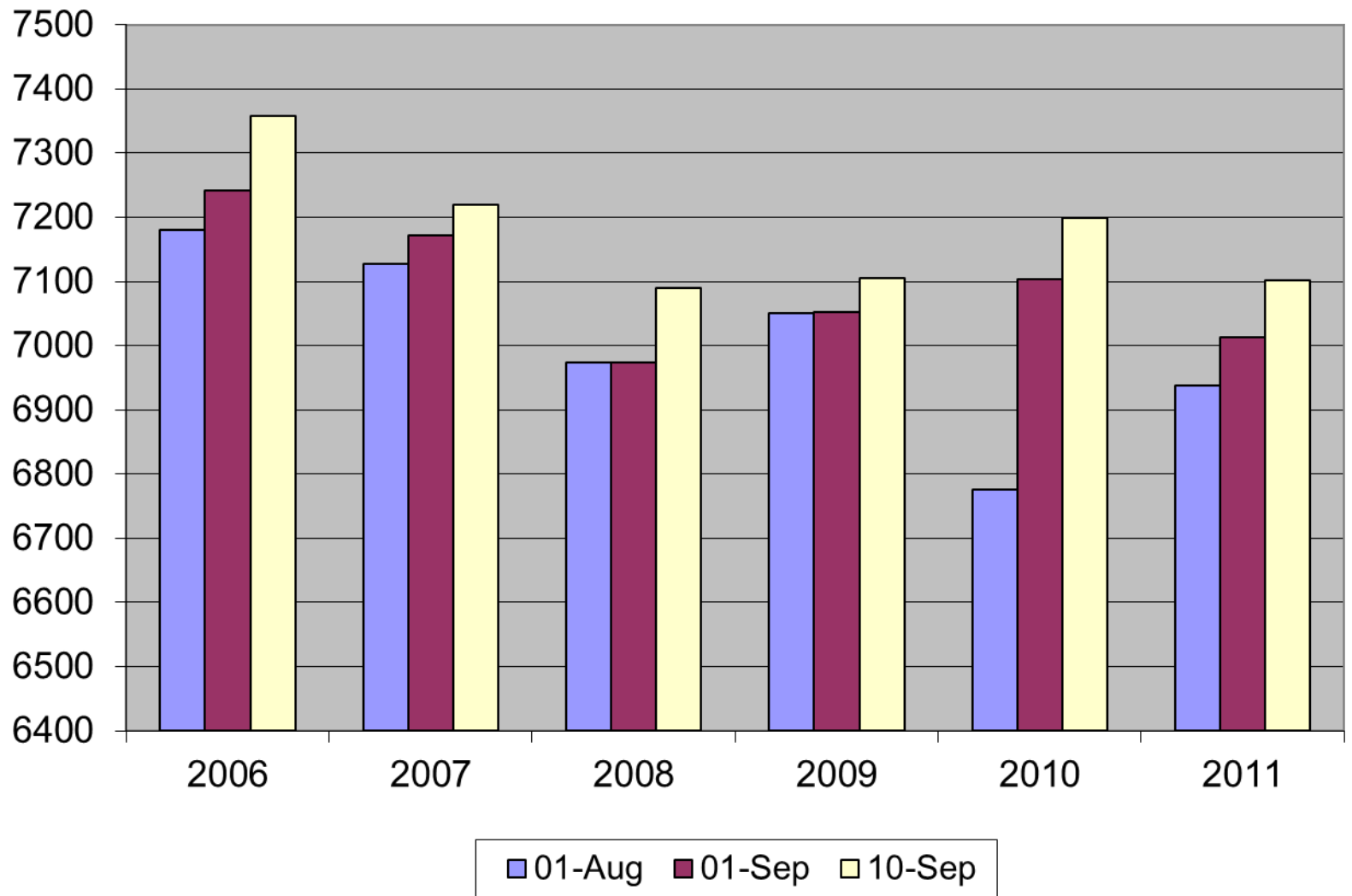


# 2011 Enrollment Analysis



**September 21, 2011**

## District Enrollment by Year & Date



**ELMIRA CITY SCHOOL DISTRICT**

09/19/11

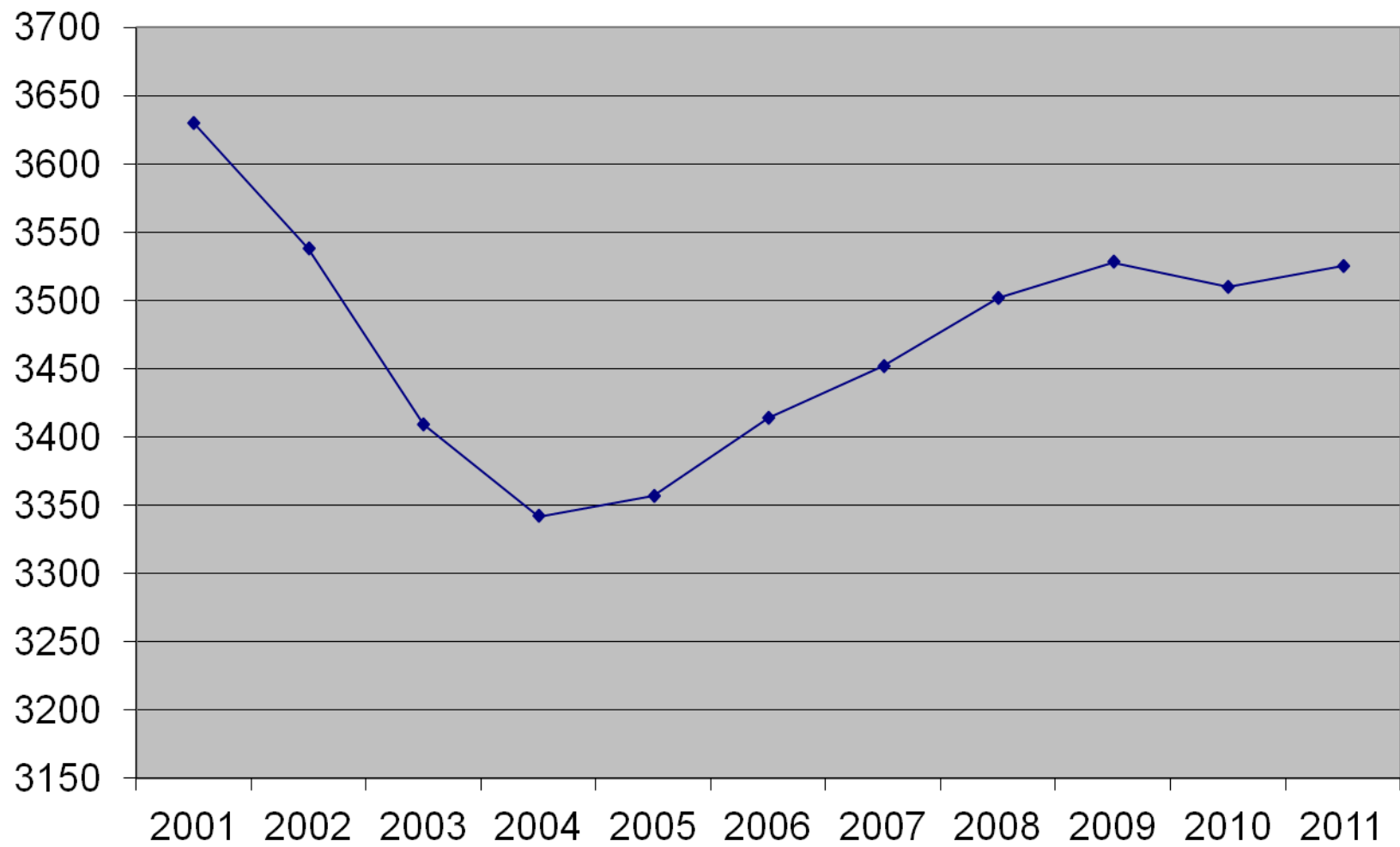
**District Enrollment Analysis**

		-	-	-	-	-	-	-	-	-	-
	<b>01-02</b>	<b>02-03</b>	<b>03-04</b>	<b>04-05</b>	<b>05-06</b>	<b>06-07</b>	<b>07-08</b>	<b>08-09</b>	<b>09-10</b>	<b>10-11</b>	<b>11-12</b>
<b>District</b>	<b>7420</b>	<b>7407</b>	<b>7268</b>	<b>7044</b>	<b>7074</b>	<b>7085</b>	<b>7017</b>	<b>6949</b>	<b>6953</b>	<b>6898</b>	<b>7101</b>
<b>Change</b>		<b>-13</b>	<b>-139</b>	<b>-224</b>	<b>30</b>	<b>11</b>	<b>-68</b>	<b>-68</b>	<b>4</b>	<b>-55</b>	<b>203</b>
<b>Total</b>		<b>-13</b>	<b>-152</b>	<b>-376</b>	<b>-346</b>	<b>-335</b>	<b>-403</b>	<b>-471</b>	<b>-467</b>	<b>-522</b>	<b>-319</b>

District Enrollment Analysis by Year & Date

<b>DATE</b>						
	<b>2006-07</b>	<b>2007-08</b>	<b>2008-09</b>	<b>2009-10</b>	<b>2010-11</b>	<b>2011-12</b>
<b>Aug. 1</b>	<b>7181</b>	<b>7127</b>	<b>6973</b>	<b>7051</b>	<b>6776</b>	<b>6938</b>
<b>Sept.1</b>	<b>7241</b>	<b>7172</b>	<b>6974</b>	<b>7053</b>	<b>7104</b>	<b>7013</b>
<b>Sept. 10</b>	<b>7357</b>	<b>7219</b>	<b>7090</b>	<b>7105</b>	<b>7199</b>	<b>7101</b>

## Elementary Enrollment by Year



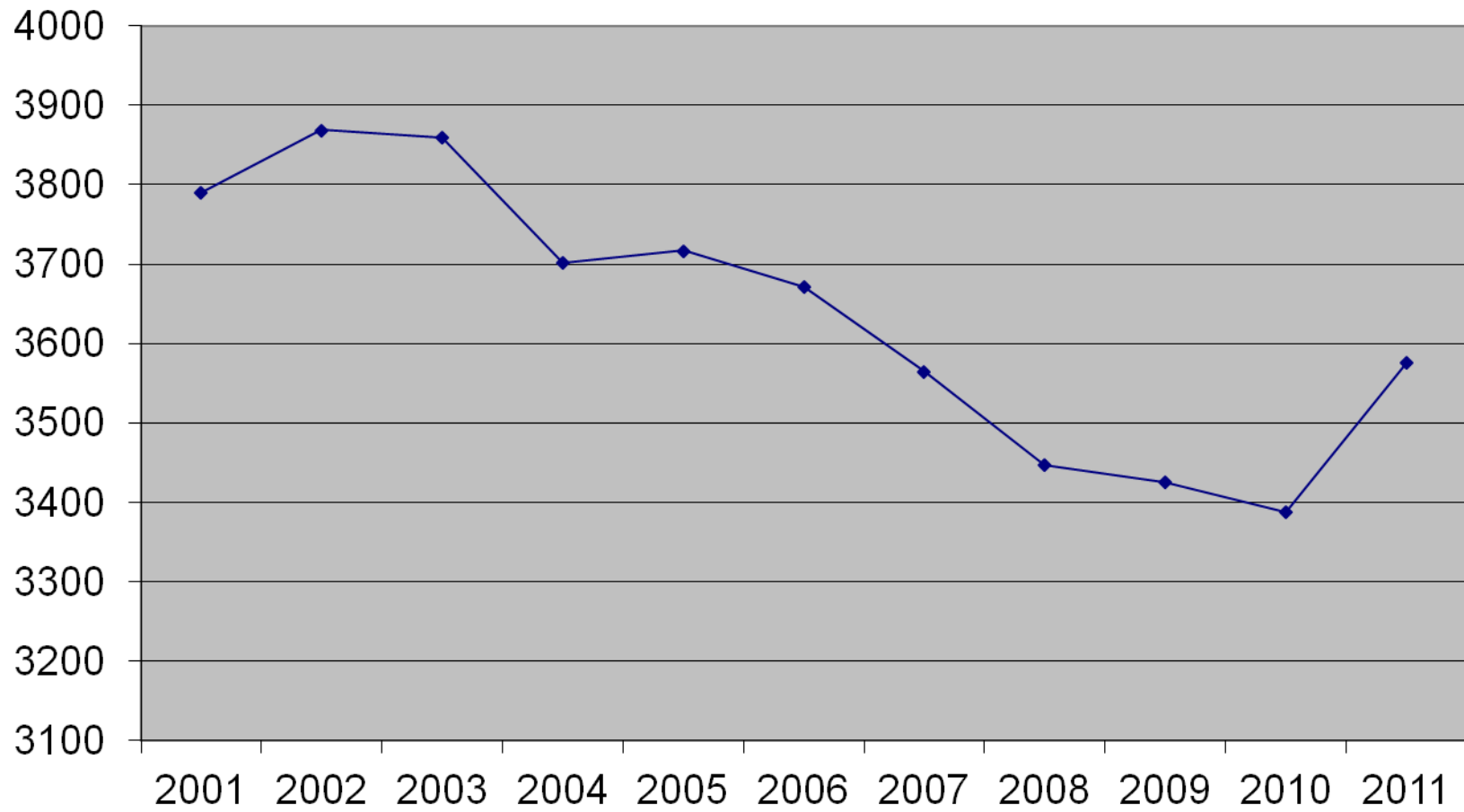


ELMIRA CITY SCHOOL DISTRICT  
Elementary Enrollment Analysis

9/19/2011

SCHOOL	YEAR-END										09/19/11
	2001-02	2002-03	2003-04	2004-05	2005-06	2006-07	2007-08	2008-09	2009-10	2010-11	2011-12
Beecher	306	284	374	333	359	359	360	369	370	386	408
Booth	482	492	0	0	0	0	0	0	0	0	0
Diven	234	240	492	418	467	472	451	462	446	416	404
Fassett	0	0	0	0	0	397	371	386	377	395	397
Hendy	406	380	499	458	486	485	546	517	513	526	526
Washington	374	380	376	396	379	0	0	0	0	0	0
<b>Total</b>	<b>1802</b>	<b>1776</b>	<b>1741</b>	<b>1605</b>	<b>1691</b>	<b>1713</b>	<b>1728</b>	<b>1734</b>	<b>1706</b>	<b>1723</b>	<b>1735</b>
<b>Difference by Year</b>		<b>-26</b>	<b>-35</b>	<b>-136</b>	<b>86</b>	<b>22</b>	<b>15</b>	<b>6</b>	<b>-28</b>	<b>17</b>	<b>12</b>
<b>Total Difference</b>		<b>-26</b>	<b>-61</b>	<b>-197</b>	<b>-111</b>	<b>-89</b>	<b>-74</b>	<b>-68</b>	<b>-96</b>	<b>-79</b>	<b>-67</b>
Broadway	541	454	426	457	451	447	476	460	476	466	447
Coburn	633	663	475	522	486	513	489	480	531	505	510
Riverside	419	415	376	362	359	351	381	441	441	439	451
Pine City	235	230	391	396	370	390	378	387	374	377	382
<b>Total</b>	<b>1828</b>	<b>1762</b>	<b>1668</b>	<b>1737</b>	<b>1666</b>	<b>1701</b>	<b>1724</b>	<b>1768</b>	<b>1822</b>	<b>1787</b>	<b>1790</b>
<b>Difference by Year</b>		<b>-66</b>	<b>-94</b>	<b>69</b>	<b>-71</b>	<b>35</b>	<b>23</b>	<b>44</b>	<b>54</b>	<b>-35</b>	<b>3</b>
<b>Total Difference</b>		<b>-66</b>	<b>-160</b>	<b>-91</b>	<b>-162</b>	<b>-127</b>	<b>-104</b>	<b>-60</b>	<b>-6</b>	<b>-41</b>	<b>-38</b>
District Total	3630	3538	3409	3342	3357	3414	3452	3502	3528	3510	3525
<b>Difference by Year</b>		<b>-92</b>	<b>-129</b>	<b>-67</b>	<b>15</b>	<b>57</b>	<b>38</b>	<b>50</b>	<b>26</b>	<b>-18</b>	<b>15</b>
<b>Total Difference</b>		<b>-92</b>	<b>-221</b>	<b>-288</b>	<b>-273</b>	<b>-216</b>	<b>-178</b>	<b>-128</b>	<b>-102</b>	<b>-120</b>	<b>-105</b>

## Secondary Enrollment by Year





ELMIRA CITY SCHOOL DISTRICT

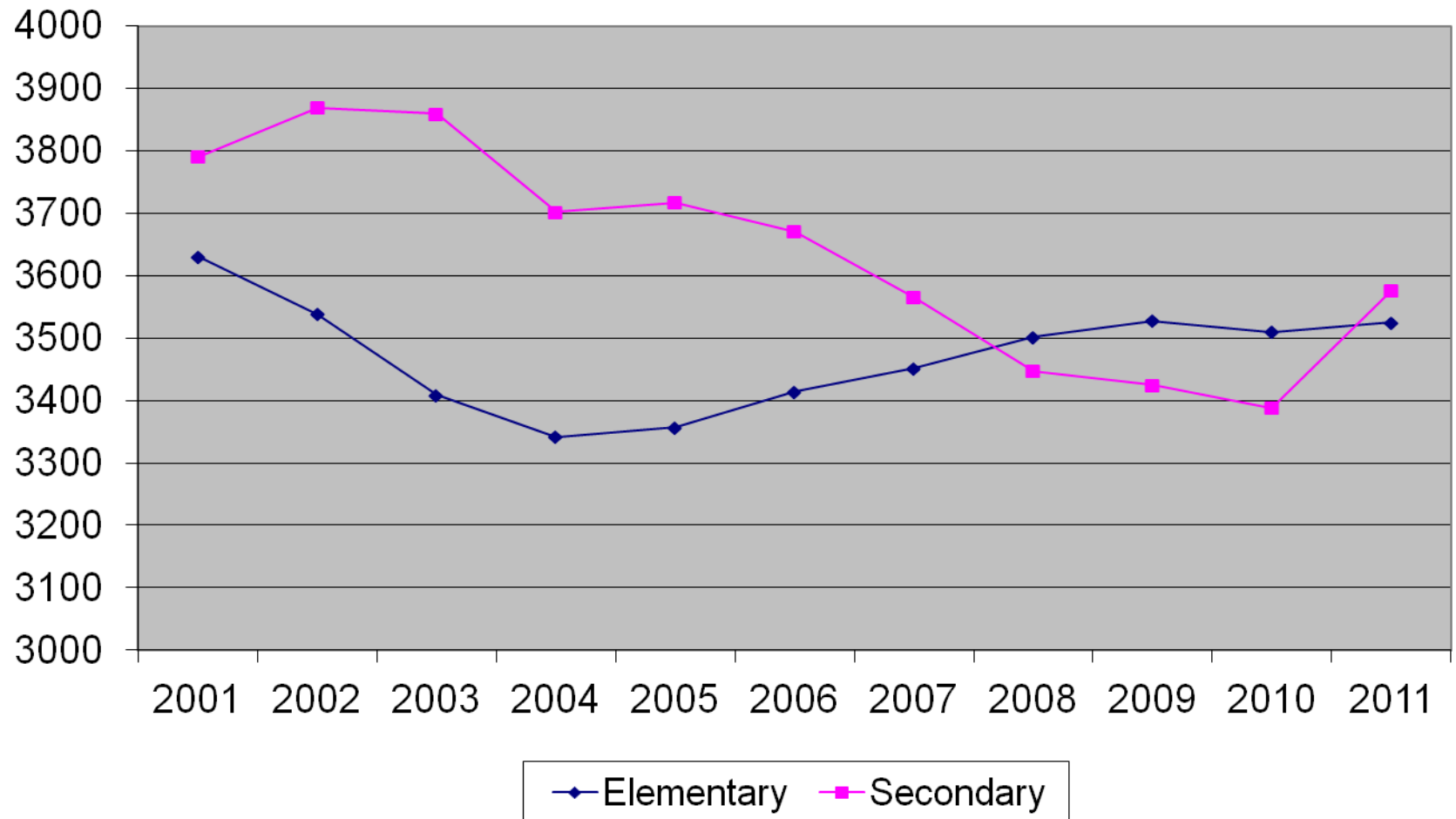
9/19/2011

Secondary Enrollment Analysis

SCHOOL	2001-02	2002-03	2003-04	2004-05	2005-06	2006-07	2007-08	2008-09	2009-10	2010-11	2011-12
			ENDING ENROLLMENT / YEARS								09/19/11
<b>Broadway M</b>	978	988	971	931	888	816	787	777	764	825	870
<b>Ernie Davis</b>	808	824	800	714	701	680	637	630	660	679	712
<b>Total</b>	<b>1786</b>	<b>1812</b>	<b>1771</b>	<b>1645</b>	<b>1589</b>	<b>1496</b>	<b>1424</b>	<b>1407</b>	<b>1424</b>	<b>1504</b>	<b>1582</b>
<b>Difference by Year</b>		<b>26</b>	<b>-41</b>	<b>-126</b>	<b>-56</b>	<b>-93</b>	<b>-72</b>	<b>-17</b>	<b>17</b>	<b>80</b>	<b>78</b>
<b>Total Difference</b>		<b>26</b>	<b>-15</b>	<b>-141</b>	<b>-197</b>	<b>-290</b>	<b>-362</b>	<b>-379</b>	<b>-362</b>	<b>-282</b>	<b>-204</b>
<b>EFA</b>	934	975	989	915	941	929	872	788	804	763	855
<b>SHS</b>	1070	1082	1099	1074	1113	1149	1097	1054	1043	1018	1087
<b>Alt High</b>	0	0	0	68	74	97	172	198	154	103	52
<b>Total</b>	<b>2004</b>	<b>2057</b>	<b>2088</b>	<b>2057</b>	<b>2128</b>	<b>2175</b>	<b>2141</b>	<b>2040</b>	<b>2001</b>	<b>1884</b>	<b>1994</b>
<b>Difference by Year</b>		<b>53</b>	<b>31</b>	<b>-31</b>	<b>71</b>	<b>47</b>	<b>-34</b>	<b>-101</b>	<b>-39</b>	<b>-117</b>	<b>110</b>
<b>Total Difference</b>		<b>53</b>	<b>84</b>	<b>53</b>	<b>124</b>	<b>171</b>	<b>137</b>	<b>36</b>	<b>-3</b>	<b>-120</b>	<b>-10</b>
<b>District Total</b>	<b>3790</b>	<b>3869</b>	<b>3859</b>	<b>3702</b>	<b>3717</b>	<b>3671</b>	<b>3565</b>	<b>3447</b>	<b>3425</b>	<b>3388</b>	<b>3576</b>
<b>Difference by Year</b>		<b>79</b>	<b>-10</b>	<b>-157</b>	<b>15</b>	<b>-46</b>	<b>-106</b>	<b>-118</b>	<b>-22</b>	<b>-37</b>	<b>188</b>
<b>Total Difference</b>		<b>79</b>	<b>69</b>	<b>-88</b>	<b>-73</b>	<b>-119</b>	<b>-225</b>	<b>-343</b>	<b>-365</b>	<b>-402</b>	<b>-214</b>

<b>Students</b>	<b>End of</b>	<b>Start of</b>	
<b>Grade</b>	<b>2010-11</b>	<b>2011-12</b>	<b>+ or -</b>
6	516	528	12
7	487	539	52
8	462	479	17
9	466	462	-4
10	482	463	-19
11	462	480	18
12	434	533	99
Special Ed	79	92	13
<b>Total</b>	<b>3388</b>	<b>3576</b>	<b>188</b>

## Elmira City School District Enrollment by Year



**Elmira City School District  
2011-2012 Elementary Class Size**

<b>SCHOOL</b>	<b>GRADE</b>	<b># STUDENTS</b>	<b>Classrooms</b>	<b>Avg Size</b>
<b>Broadway Elementary</b>				
	PK	36	2	18
	K	65	3	22
	1	74	3	25
	2	59	3	20
	3	72	3	24
	4	62	3	21
	5	73	3	24
	<b>Total</b>	<b>441</b>	<b>18</b>	<b>23</b>
<b>Diven Elementary</b>				
	PK	36	2	18
	K	76	3	25
	1	62	3	21
	2	64	3	21
	3	55	3	18
	4	43	2	22
	5	54	3	18
	<b>Total</b>	<b>390</b>	<b>17</b>	<b>21</b>
<b>Riverside Elementary</b>				
	PK	36	2	18
	K	66	3	22
	1	77	3	26
	2	59	3	20
	3	75	3	25
	4	70	3	23
	5	58	3	19
	<b>Total</b>	<b>441</b>	<b>18</b>	<b>23</b>

**Elmira City School District  
2011-2012 Elementary Class Size**

<b>SCHOOL</b>	<b>GRADE</b>	<b># STUDENTS</b>	<b>Classrooms</b>	<b>Avg Size</b>
<b>Beecher Elementary</b>				
	PK	36	2	18
	K	80	3	27
	1	62	3	21
	2	64	3	21
	3	65	3	22
	4	52	2	26
	5	44	2	22
	<b>Total</b>	<b>403</b>	<b>16</b>	<b>23</b>
<b>Pine City Elementary</b>				
	PK	36	2	18
	K	60	2	30
	1	51	2	26
	2	53	3	18
	3	47	2	24
	4	60	3	20
	5	56	3	19
	<b>Total</b>	<b>363</b>	<b>17</b>	<b>19</b>
<b>Coburn Elementary</b>				
	PK	36	2	18
	K	77	4	19
	1	87	4	22
	2	69	3	23
	3	71	3	24
	4	79	3	26
	5	76	3	25
	<b>Total</b>	<b>495</b>	<b>20</b>	<b>23</b>

**Elmira City School District  
2011-2012 Elementary Class Size**

<b>SCHOOL</b>	<b>GRADE</b>	<b># STUDENTS</b>	<b>Classrooms</b>	<b>Avg Size</b>
<b>Hendy Elementary</b>				
	PK	36	2	18
	K	77	4	19
	1	90	4	23
	2	78	4	20
	3	77	3	26
	4	75	3	25
	5	93	4	23
	<b>Total</b>	<b>526</b>	<b>22</b>	<b>22</b>
<b>Fassett School</b>				
	PK	36	2	18
	K	67	3	22
	1	66	3	22
	2	52	3	17
	3	66	3	22
	4	56	3	19
	5	54	3	18
	<b>Total</b>	<b>397</b>	<b>18</b>	<b>20</b>
<b>Grade Summary</b>				
	PK	288	16	18
	K	568	25	23
	1	569	25	23
	2	498	25	20
	3	528	23	23
	4	497	22	23
	5	508	24	21
	<b>District Total</b>	<b>3456</b>	<b>144</b>	<b>22</b>

Self Contained Special Education Classrooms are not Included in Totals  
 Enrollment Data was extracted at 4:00 PM from the SASI Data Base  
 Actual head counts and enrollment data may vary slightly due to the ongoing processing of changes.

# Elementary Class Size

## Hot Spots:

- Pine City K:  $60 - 2 = 30$
- Pine City 1:  $51 - 2 = 25.5$
- Beecher K:  $80 - 3 = 26.6$
- Coburn 4:  $79 - 3 = 26.3$
- Hendy 3:  $77 - 7 = 25.6$

**Elmira City School District  
2011-2012 Elementary Class Size**

<b>SCHOOL</b>	<b>GRADE</b>	<b># STUDENTS</b>	<b>Classrooms</b>	<b>Avg Size</b>
<b>Broadway Elementary</b>				
	PK	36	2	18
	K	65	3	22
	1	74	3	25
	2	59	3	20
	3	72	3	24
	4	62	3	21
	5	73	3	24
	<b>Total</b>	<b>441</b>	<b>18</b>	<b>23</b>
<b>Diven Elementary</b>				
	PK	36	2	18
	K	76	3	25
	1	62	3	21
	2	64	3	21
	<b>3</b>	<b>55</b>	<b>2</b>	<b>27.5</b>
	4	43	2	22
	5	54	3	18
	<b>Total</b>	<b>390</b>	<b>17</b>	<b>21</b>
<b>Riverside Elementary</b>				
	PK	36	2	18
	K	66	3	22
	1	77	3	26
	2	59	3	20
	3	75	3	25
	4	70	3	23
	5	58	3	19
	<b>Total</b>	<b>441</b>	<b>18</b>	<b>23</b>



**Elmira City School District  
2011-2012 Elementary Class Size**

<b>SCHOOL</b>	<b>GRADE</b>	<b># STUDENTS</b>	<b>Classrooms</b>	<b>Avg Size</b>
<b>Beecher Elementary</b>				
	PK	36	2	18
	K	80	3	27
	1	62	3	21
	2	64	3	21
	3	65	3	22
	4	52	2	26
	5	44	2	22
	<b>Total</b>	<b>403</b>	<b>16</b>	<b>23</b>
<b>Pine City Elementary</b>				
	PK	36	2	18
	K	60	2	30
	1	51	2	26
	<b>2</b>	<b>53</b>	<b>2</b>	<b>26.5</b>
	3	47	2	24
	4	60	3	20
	5	56	3	19
	<b>Total</b>	<b>363</b>	<b>17</b>	<b>19</b>
<b>Coburn Elementary</b>				
	PK	36	2	18
	K	77	4	19
	1	87	4	22
	2	69	3	23
	3	71	3	24
	4	79	3	26
	5	76	3	25
	<b>Total</b>	<b>495</b>	<b>20</b>	<b>23</b>

**Elmira City School District  
2011-2012 Elementary Class Size**

<b>SCHOOL</b>	<b>GRADE</b>	<b># STUDENTS</b>	<b>Classrooms</b>	<b>Avg Size</b>
<b>Hendy Elementary</b>				
	PK	36	2	18
	<b>K</b>	<b>77</b>	<b>3</b>	<b>25.6</b>
	1	90	4	23
	2	78	4	20
	3	77	3	26
	4	75	3	25
	5	93	4	23
	<b>Total</b>	<b>526</b>	<b>22</b>	<b>22</b>
<b>Fassett School</b>				
	PK	36	2	18
	K	67	3	22
	1	66	3	22
	<b>2</b>	<b>52</b>	<b>2</b>	<b>26</b>
	3	66	3	22
	4	56	3	19
	5	54	3	18
	<b>Total</b>	<b>397</b>	<b>18</b>	<b>20</b>
<b>Grade Summary</b>				
	PK	288	16	18
	K	568	25	23
	1	569	25	23
	2	498	25	20
	3	528	23	23
	4	497	22	23
	5	508	24	21
	<b>District Total</b>	<b>3456</b>	<b>144</b>	<b>22</b>

**Self Contained Special Education Classrooms are not Included in Totals**  
**Enrollment Data was extracted at 4:00 PM from the SASI Data Base**  
**Actual head counts and enrollment data may vary slightly due to the ongoing processing of changes.**